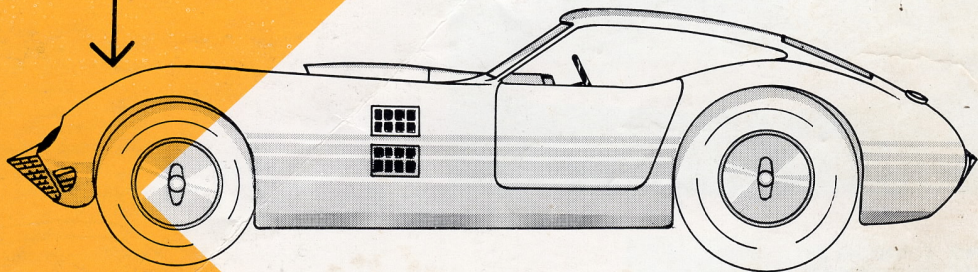


Kellison

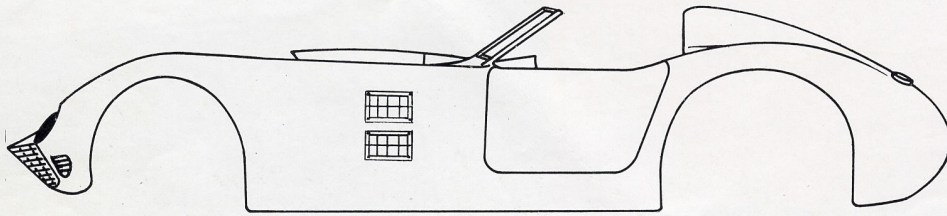
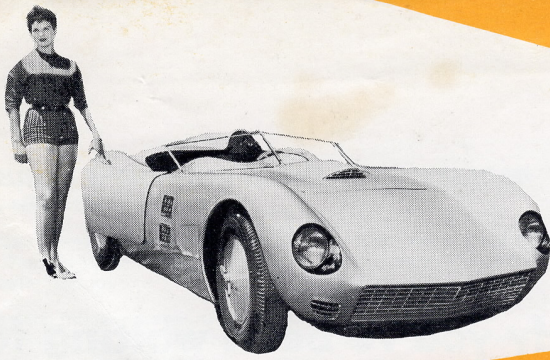
the fiber glass body you've been waiting for!



Kellison Engineering & Manufacturing Co.

905 Sutter Street, Folsom, California

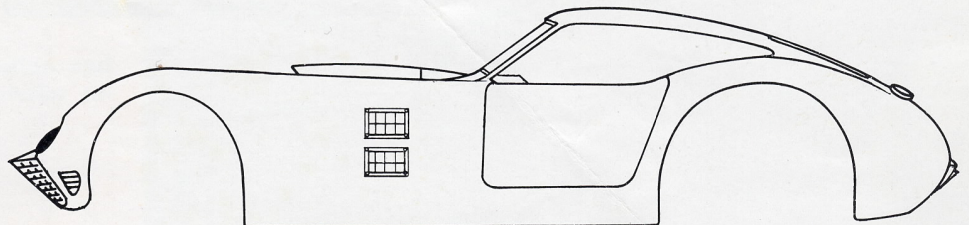
THE KELLISON J-3 ROADSTER



J-2 ROADSTER — 102" wheelbase with no headrest. Base body price, \$380.00. Complete body price..... **\$500.00**

J-3 ROADSTER — 98" wheelbase with one headrest. Base body price, \$400.00. Complete body price..... **\$520.00**

K-2 ROADSTER — 86" or 88" wheelbase with no headrest. Base body price — \$365.00. Complete body price..... **\$485.00**



J-4 GRAND TOURISIMO COUPE — 98" wheelbase. Base body price — \$365.00. Complete body price..... **\$605.00**

K-3 TOURISIMO COUPE — 86" or 88" wheelbase. Base body price — \$390.00. Complete body price..... **\$570.00**

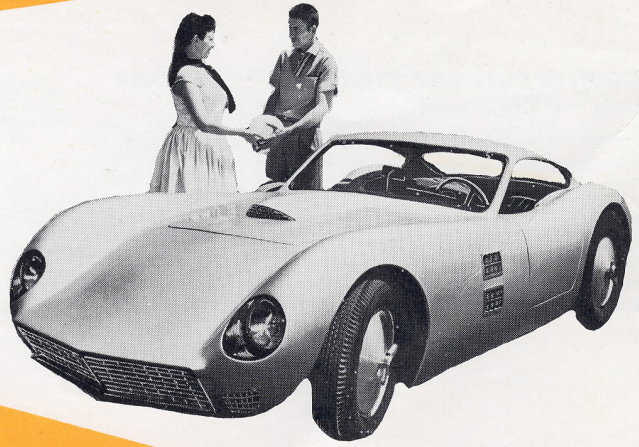
*Complete body includes door liners, hinge boxes, inner fender panels (4), firewall, cockpit liner, dash and hood.

ACCESSORY PRICE LIST

Grill section (right or left).....	\$22.50 ea.	Tail lamp assembly.....	9.30 ea.
Front brake intake scoops (right or left).....	5.20 ea.	Door latch with striker plate (right or left).....	10.20 ea.
Engine, side body vents (set of two).....	26.25	Steering wheel with attaching plate.....	32.50
Windshield (J-4 or K-3 Coupe) plain.....	70.35 ea.	Radiator.....	72.50
Windshield (J-4 or K-3 Coupe) tinted.....	74.80 ea.	Quarter windows.....	17.50 ea.
Windshield rubber moulding.....	8.90 ea.	Quarter window rubber moulding.....	11.20 ea.
Windshield (Roadster Models — (right or left).....	19.60 ea.	Door glass (right or left).....	21.60 ea.
Windshield Posts (Roadster Models).....	set of 3 22.25	Door glass roll-up mechanism.....	26.00 ea.
Rear glass.....	50.50 ea.	Front bumper (uprights).....	9.50 ea.
Rear glass rubber moulding.....	7.70 ea.	Rear bumper (uprights).....	9.50 ea.
Side glass, chrome moulding (right or left).....	4.60 ea.	Color (rocket red, orbit blue, arctic white, or ebony).....	40.00
Hood closing latches (per side).....	4.50	Body sanded and primed ready for paint.....	75.00
Hood hinges (right or left).....	9.20 ea.	Doors and hinges installed.....	per set 50.00
Head lamp assembly.....	15.50 ea.	Dash instruments.....	Prices on request

KELLISON ENGINEERING AND MANUFACTURING COMPANY

THE KELLISON J-4 GRAN TOURISIMO COUPE



IT'S A KELLISON . . . means it's the fiber glass body every discriminating sports car owner wants . . . and for many excellent reasons!

The Kellison sports car bodies are beautiful . . . and represent the perfect integration of automotive artistry and construction.

But more than this . . . Kellison sports car bodies are the result of professional racing and practical engineering experience, combined to produce outstanding products . . . the incomparable J-4 Gran Tourisimo . . . J-3 and J-2 Roadster . . . and the K-3 and K-2 body styles for sports cars under 1500 c.c.

Most sports car enthusiasts want a readily available sports car body requiring little or no modifications. They want a durable, quality body equipped with desirable stress features and construction refinements . . . **not** just another flimsy shell.

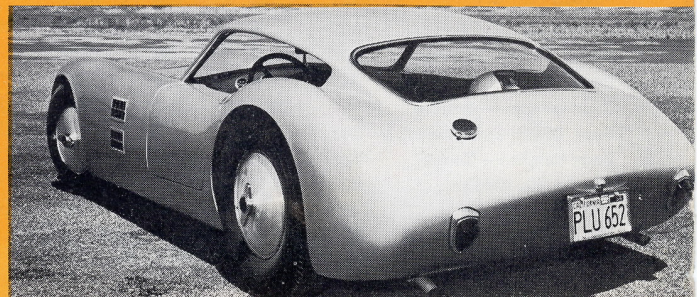
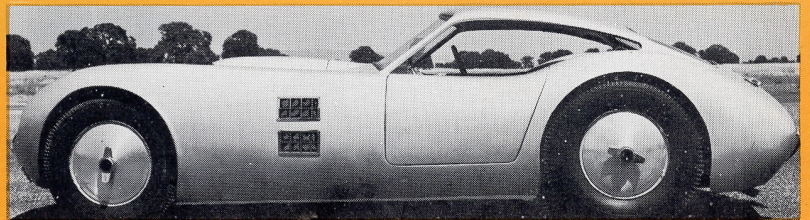
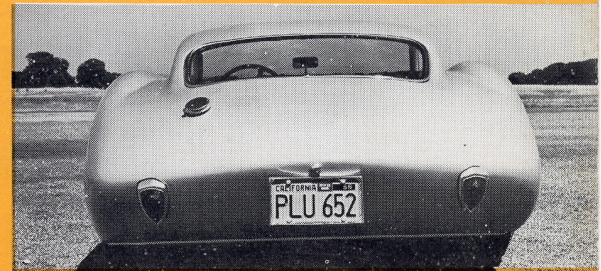
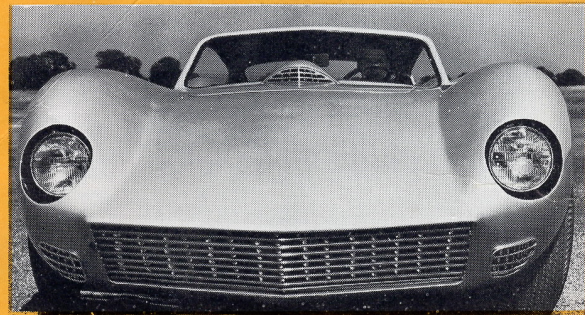
Kellison sports car bodies have been designed with this in mind, and in addition possess greater strength and durability due to integral stress construction.

All are equipped with floor pan . . . inner wheel wells . . . re-inforced-beaded fender and body openings and fire wall. Headlight receptables . . . hood scoop . . . dash board . . . door jambs . . . floor pans . . . and drive-shaft tunnel are built right in.

The J-4 Gran Tourisimo body (or complete sports car, if desired) is recommended for the discriminating sports car owner who plans to do more than race. This model is ideal for all weather . . . all year 'round sport and touring with its tight sealing doors, top and body openings.

A variety of permanent, extremely durable corrosion resistant colors are available . . . rocket red . . . orbit blue arctic white or ebony. All colors are impregnated into the body glass to a depth of forty thousandths of an inch.

When ordering your Gran Tourisimo or Roadster simply state frame and wheelbase dimensions. Your Kellison fiber glass sports car body will arrive engineered to fit your specifications with the very minimum of frame modification.



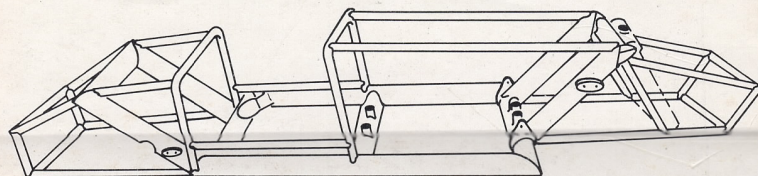
905 SUTTER STREET, FOLSOM CALIFORNIA • YUkon 5-4022

KELLISON SPORTS CAR FRAME.....\$650.00

(specify wheelbase desired)

Kellison frames are constructed of .60 hot rolled, seam welded, 4" diameter steel tubing. Main and upper struts of .40-2" diameter tubing.

Complete frame consists of the following components:
 Front axle . . . rear axle housing . . . rear axles . . . front springs . . . rear springs . . . steering mount . . . shock mounts . . . radiator mounts . . . transmission mounts . . . motor mounts . . . and forward and rear roll bars.



PLANS FOR KELLISON SPORTS CAR TUBE FRAME AVAILABLE FOR \$5.00 PER SET



. . . strength and proper closure are assured with the integral fiber glass hood-lip pictured here.

. . . note the door construction and sealing detail as well as interior refinements.



Body Type	J-2	J-3	J-4	K-2	K-3	Body Type	J-2	J-3	J-4	K-2	K-3
Overall Height.....	30"	37"	39"	29"	38"	Back Glass Height.....	none	none	20"	none	20"
Overall Width.....	67"	67"	67"	61"	61"	Back Glass Width.....	none	none	40"	none	40"
Overall Length.....	169"	165"	165"	154"	154"	Grill Opening Width.....	37"	37"	37"	37"	37"
Wheelbase.....	102"	98"	98"	88-86"	88-86"	Grill Opening Height.....	9 1/2"	9 1/2"	9 1/2"	9 1/2"	9 1/2"
Wheel Cutout Diameter.....	30"	30"	30"	28"	28"	Cockpit Opening Length ..	34"	30"		30"	
Door Length — Top.....	34"	30"	34"	30"	34"	Cockpit Opening Width ..	47"	47"	47"	47"	47"
Door Length — Bottom.....	27 1/2"	23 1/2"	27 1/2"	23 1/2"	27 1/2"	Headrest.....	none	one	none	none	none
Door Width — Center.....	10"	10"	10"	10"	10"	Hood Width — Front.....	30"	30"	30"	30"	30"
Door Height — Center.....	26"	26"	26"	26"	26"	Hood Width — Rear.....	38"	38"	38"	38"	38"
Windshield Height.....	13"	13"	20"	13"	20"	Hood Length.....	38"	38"	38"	36"	36"
Windshield Width.....	48"	48"	50"	48"	50"						